




SAMPSON COUNTY 911 & ES FACILITIES

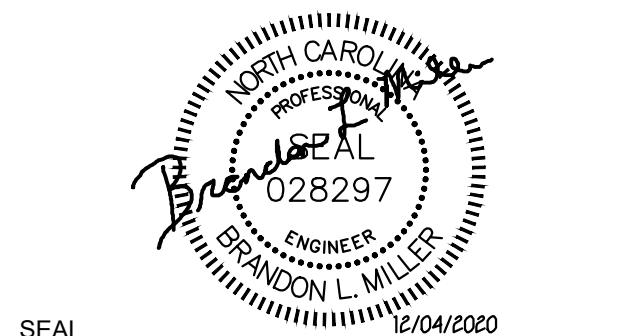
CLINTON,
NORTH CAROLINA

CONSTRUCTION DOCUMENTS

FLOOR PLAN - SUPPLEMENTAL GROUNDING

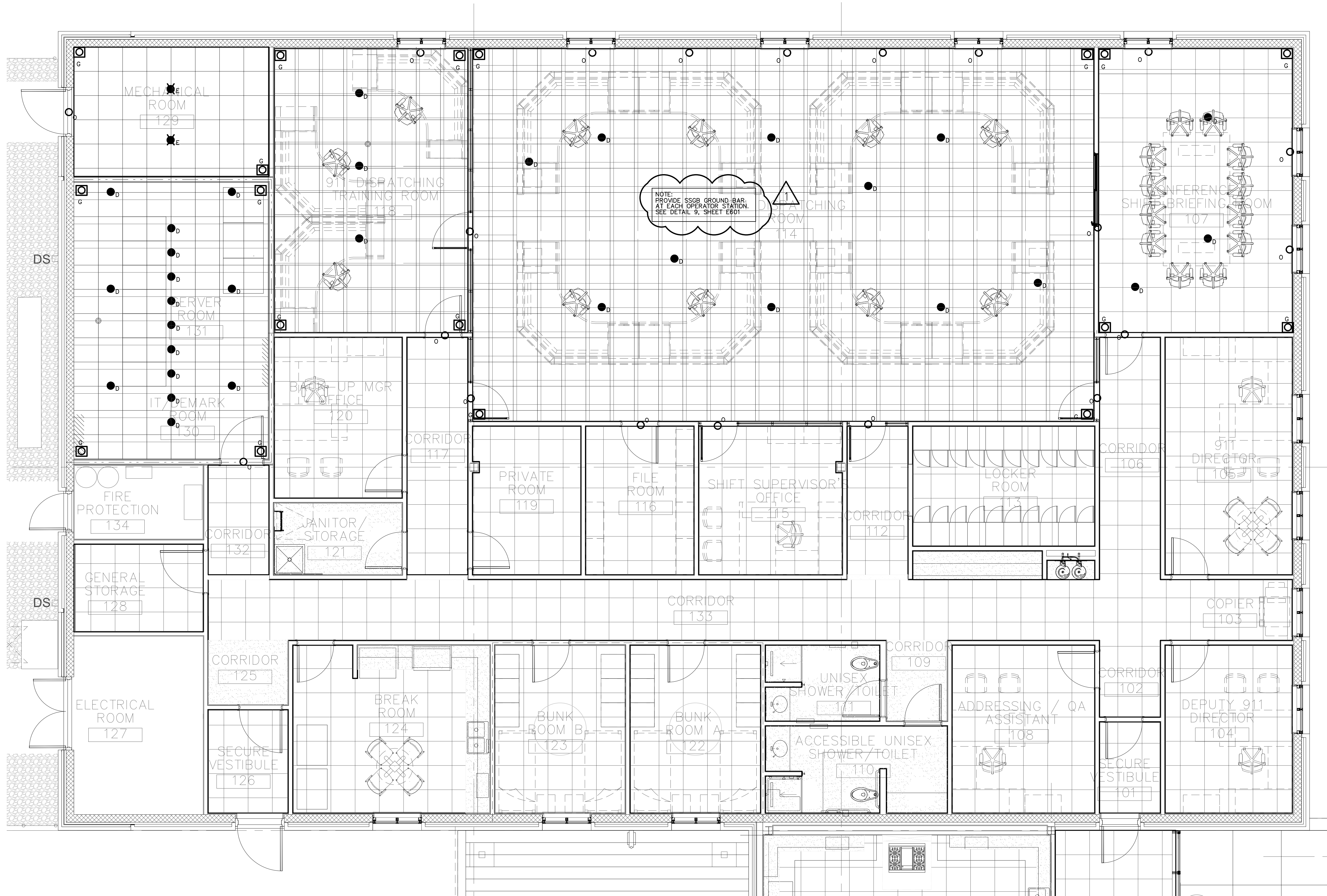
DATE	12.04.2020	
PROJECT NO	20003	
REVISIONS		
NUM.	DATE	DESCRIPTION:
	12-17-2020	REVISION #1

THIS DRAWING IS THE PROPERTY OF ADW ARCHITECTS, P.A. AND SHALL NOT BE REPRODUCED OR COPIED IN WHOLE OR IN PART. IT SHALL NOT BE USED ON ANY OTHER PROJECT OR GIVEN TO ANY OTHER COMPANY OR AGENCY WITHOUT THE CONSENT OF ADW ARCHITECTS, P.A.



SEAL

SHEET NUMBER
E012



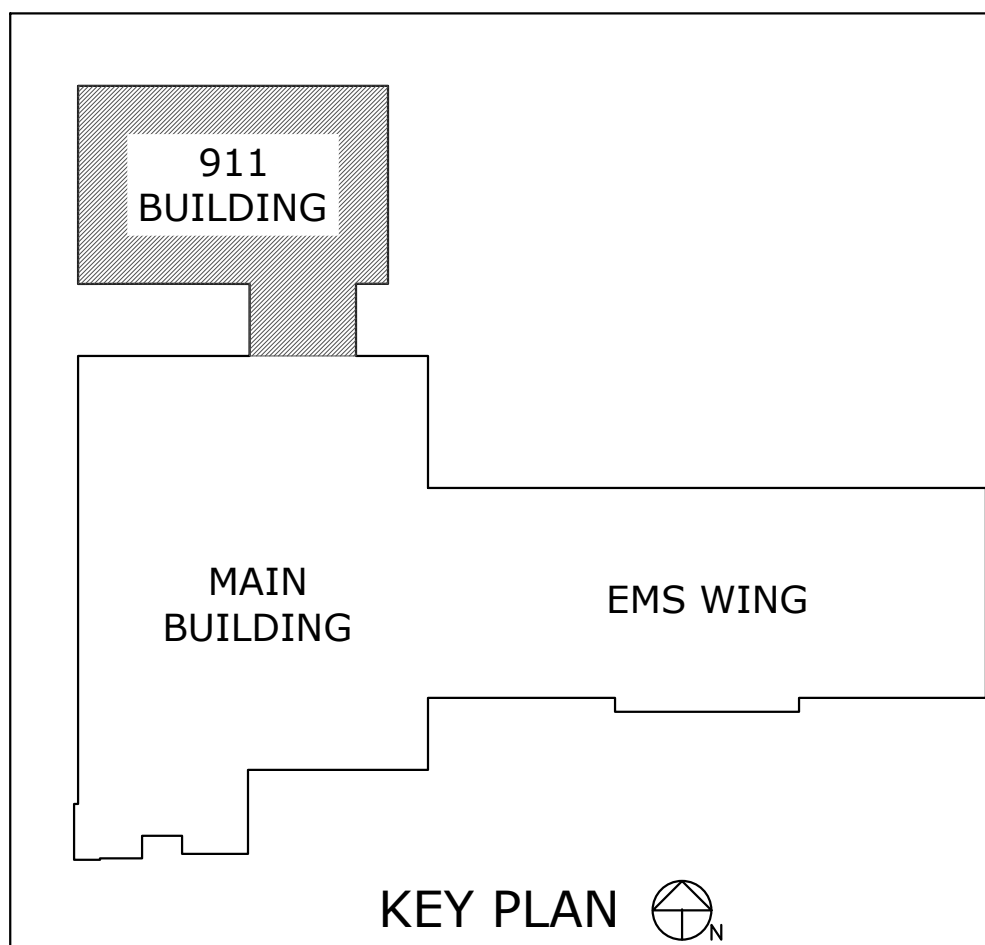
1 FLOOR PLAN - SUPPLEMENTAL GROUNDING 1/4" = 1'-0"

GENERAL NOTES (INTERIOR SUPPLEMENTAL GROUNDING ONLY):

- ALL INTERIOR SUPPLEMENTAL GROUND CONDUCTORS ARE TO BE STRANDED AND INSULATED "GREEN" COPPER.
- ALL GROUND BUS CONDUCTOR RUNS UNDER 33' IN OVERALL LENGTH ARE TO BE #2.
- ALL GROUND BUS CONDUCTOR RUNS BETWEEN 34' AND 41' IN OVERALL LENGTH ARE TO BE #1.
- ALL SHOWN GROUNDING POINTS ARE TO BE CONNECTED TO THE GROUNDING GRID UNDER THE RAISED FLOOR - VIA GROUND BUS CONDUCTOR.
- THE E.C. CAN CONNECT MULTIPLE GROUNDING POINTS TO GROUND BUS CONDUCTOR/RAISED FLOOR GROUND GRID - THE LENGTH OF THE GROUND BUS DETERMINES THE SIZE OF THE GROUNDING BUS CONDUCTOR. SEE NOTES 2 AND 3. ALSO SEE ACCEPTABLE CONNECTION METHODS FOR CONNECTING EQUIPMENT GROUNDING CONDUCTORS TO THE GROUND BUS CONDUCTOR.
- SEE POWER PLANS FOR CABLE TRAY RUNS.
- ALL WINDOW FRAME, DOOR FRAME AND ANCILLARY EQUIPMENT GROUND CONDUCTORS UNDER 13' ARE TO BE A #6 COPPER.
- ALL INTERIOR GROUND CONNECTIONS SHOULD BE TWO-HOLE, TIN PLATED, IRREVERSIBLE CRIMP LUG ATTACHED WITH 300 SERIES SS.

GROUNDING LEGEND (INDOOR SYMBOLS ONLY)

- GROUNDING CONNECTION TO MECHANICAL DIFFUSER GROUNDING
- CONNECTION TO DUCTWORK OR MECHANICAL EQUIPMENT GROUNDING
- CONNECTION TO METAL WINDOW OR DOOR FRAME GROUNDING
- CONNECTION TO CEILING GRID



KEY PLAN